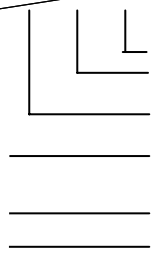


KZ1000

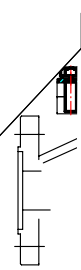
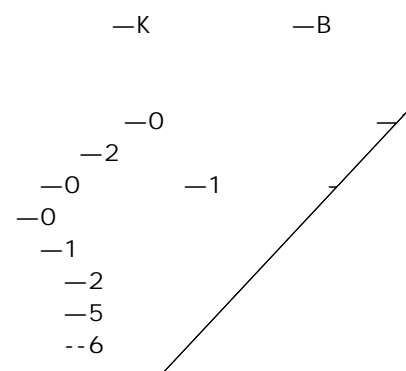


KZ10

KZ1000

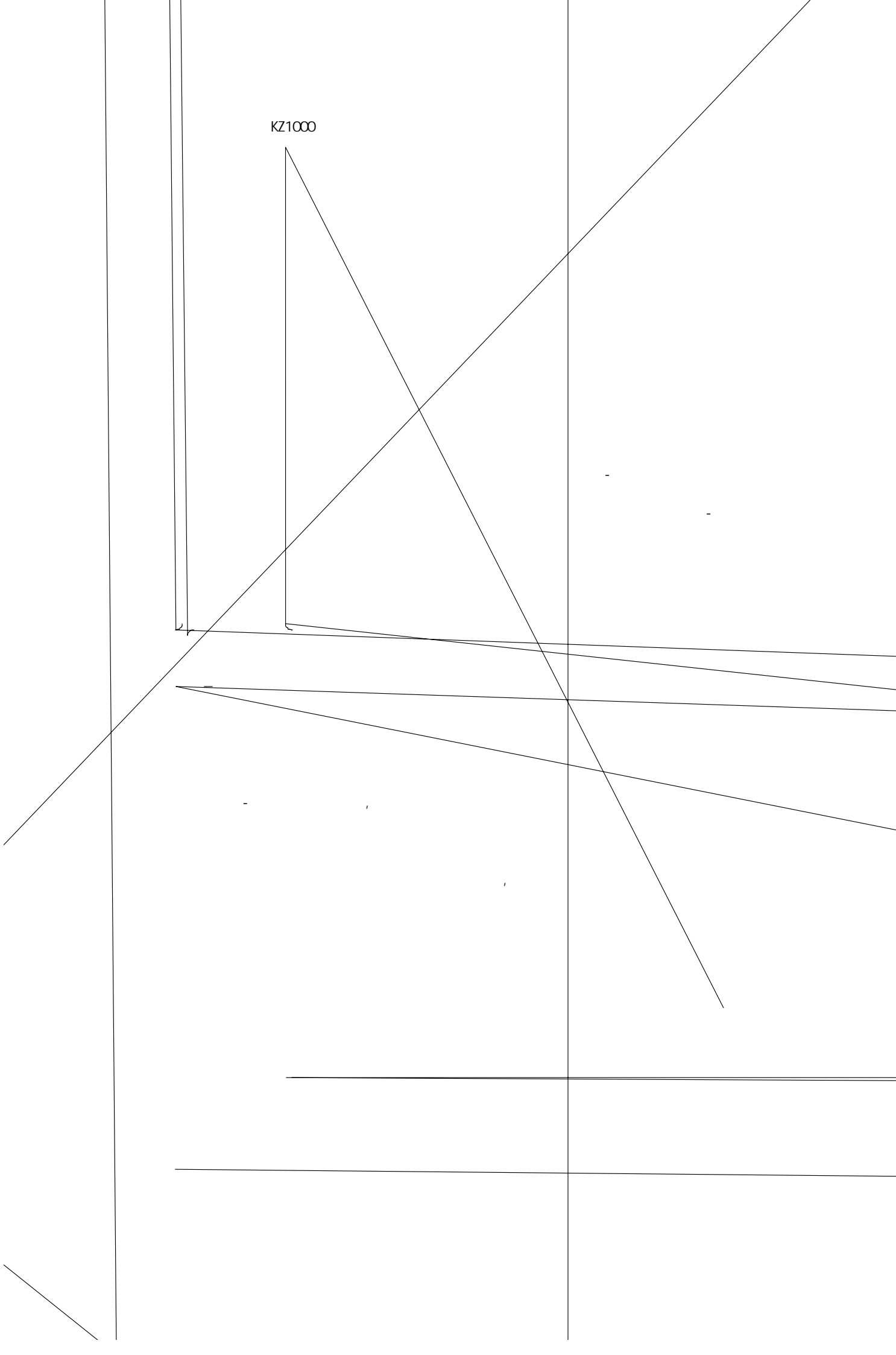


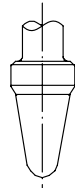
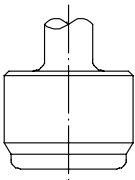
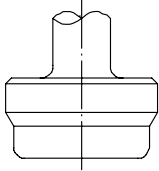
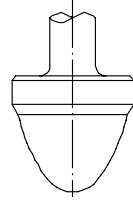
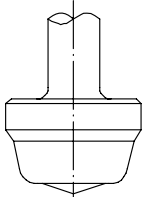
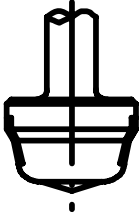
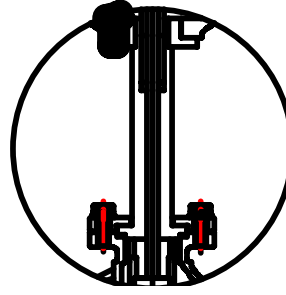
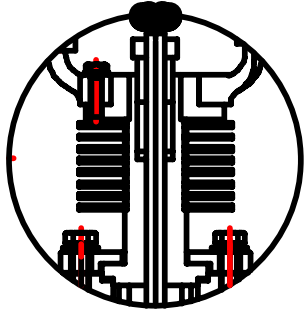
DN80
DN80



2
KZ1000

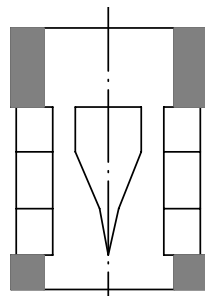
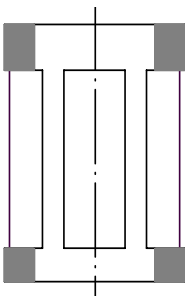
KZ1000



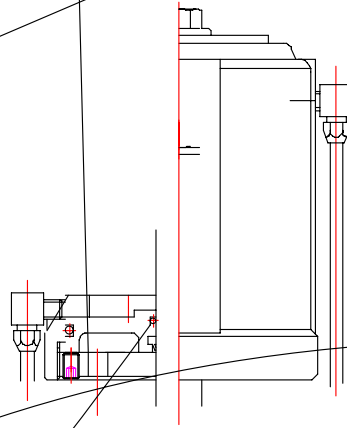


)

(



(0.3-1.0MPa)



20 100KPa

ZMA

() ZMB (),
A— B—

2

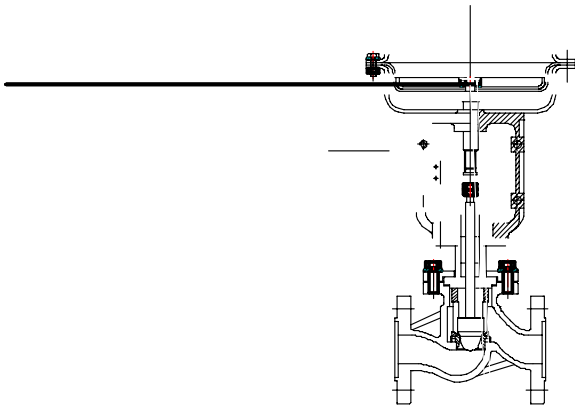
1	(%)	± 5.0	± 1.0	± 15.0	± 4.0
2	(%)	3.0	1.0	10.0	3.0
3	(%)	3.0	0.4	8.0	1.0
4	(%)	± 2.5	± 1.0	± 6.0	± 2.5
		± 5.0		± 15.0	
		± 5.0		± 15.0	
		± 2.5		± 6.0	
5		2.5	2.5	6.0	2.5

3

		GB/T4213-92 JB/T7387-94					
	Kv	0.1	0.16	0.25	0.4	0.63	
		20 1			30 1	50 1	
		PN1.6 PN4.0 PN6.4 Cl ss150, 300, 600					
	(mm)	DN20 DN200					
		FF FM RF RJ LG					
		GB/T9113.1-2000 HG20592-97 JB/T79-94					
		SW 40 50mm BW 65 200mm					
		GB/T4213-92 ANSI B16.104-1976					
		GB/T4213-92 ANSI B16.104-1976					
		-100 425					
		NEMA ICS1-110-1973 Type 4					

Stellite	44	-196	425	0	-30	200
D322	62	-60	650	0	-70	200
				0	-10	70

1.



	DN	20	25	32	40	50	65	80	100	125	150	200
L	PN16	180	185	200	220	250	275	300	350	410	450	550
	PN40	180	190	210	230	255	285	310	355	425	460	560
	PN64	190	220	210	235	265	295	320	370	440	475	570
H		655	660	680	700	780	830	850	930	990	1050	1150
		755	760	780	850	930	980	1000	1130	1190	1250	1350
		755	760	780	850	930	980	1000	1130	1190	1250	1350
A		320							370	440	475	570

" " _ _ _